

# Neoss® Guide Kit

## Indication

Neoss® Guide Kit provides a fully guided solution for surgical preparation using existing Neoss drills with subsequent placement of Neoss Implants Ø3.5 - Ø6.0 mm of 7-15 mm lengths.

## Advantages

With the highest degree of accuracy and technical innovation, the Neoss® Guide Kit has been designed to maximize ease of use and simplicity by utilizing existing Neoss instruments, i.e. drills and countersinks, and by using your planning software and guide manufacturer of choice<sup>1</sup>. This results in an efficient and cost effective method for dental implant placement.

The Neoss® Guide solution is designed to achieve the following:

- Integration with standard Neoss surgical drill components and drilling protocol.
- Minimize complexity compared to currently available guided systems with large assortments and complex procedures.
- Versatility that enables use with most currently available surgical guides<sup>1</sup>.
- Safe and accurate drilling protocol with "drill to hub" and "countersink to hub". Together with "implant insertion to hub", it provides a fully guided implant placement of Neoss Ø3.5 - Ø6.0 mm implants.
- Provide a uniquely versatile method that allows the sleeve position to be at various heights to cater for a wide spread of clinical applications ranging from deeply submerged implants to cases with limited occlusal height.

## Concept

Case planning is made in your existing planning software and the guide is manufactured by your guide provider (see compatible systems below).

For surgical preparation and implant placement, the Neoss® Guide Kit is required, which is a tray with dedicated instruments adapting the surgical guide to the existing Neoss drills and countersinks. The surgical steps after guide installation are:

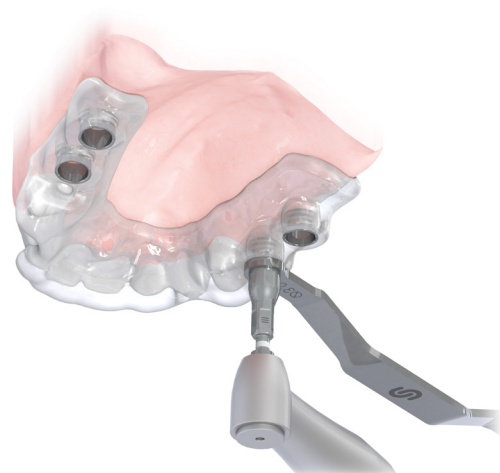
1. Drill to hub
2. Countersink to hub (optional)
3. Implant placement to hub

The meaning of "drill to hub" is to drill to a complete stop.

## <sup>1</sup> Compatible Systems

Software Company	Planning Software	Guide	Ø3.5-4.5 Implants	Ø5.0-6.0 Implants
3DIEMME	3Diagnosys	RealGUIDE	✓	✓
Anatamage	Invivio 5	Anatamage Guide	✓	In progress
Materialise	Simplant	Simplant SAFE guide (use NobelGuide <sup>2</sup> )	✓	N/A
Sirona SICAT	GALILEOS Implant	SICAT surgical guides	✓	✓
	SICAT Implant			
NSequence	Maven Pro	NSequence Surgical Guide	✓	In progress
Dental Wings	coDiagnostiX	coDiagnostiX Guide	✓	✓
3DDX	coDiagnostiX	3DDX Surgical Guide	✓	✓
3Shape	Implant Studio	Implant Studio	✓	✓
Nobel Biocare	NobelClinician Software <sup>2</sup>	NobelGuide <sup>2</sup>	✓	N/A
360imaging	360dps	360ips	✓	✓
Swissmeda	SMOP	SMOP	✓	✓
Digital Dental Service	DPS-pro	DPS-pro	✓	✓

<sup>2</sup> Use Replace RP 4.3 as reference implant and consider dimensional differences.



Courtesy of 3Diemme (guide image)



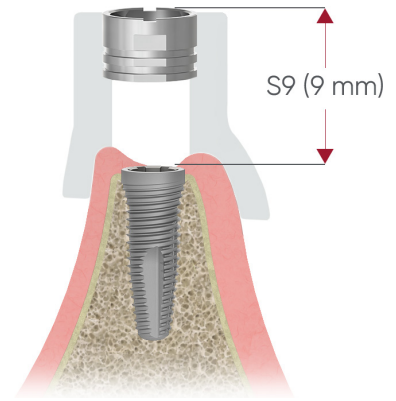
## Assortment

Art. No.	Description
51154	Neoss® Guide Kit Ø3.5 - Ø6.0 Includes 5x Drill-Hubs, 2x Countersink Conduits, 4x Implant Mount Ø5.0 S9, 2x Implant Mount Ø6.0 S9, 7x Guide Keys, 3x Guide Key Adapter, 1x Holder Guide Key Adapter.
51173	Implant Mount Ø5.0 S9, Neoss® Guide - 2 pcs*
51174	Implant Mount Ø6.0 S9, Neoss® Guide - 2 pcs*
51160	Neoss® Guide - Drill-Hub I
51161	Neoss® Guide - Drill-Hub II
51162	Neoss® Guide - Drill-Hub III
51163	Neoss® Guide - Drill-Hub IV
51164	Neoss® Guide - Drill-Hub V
51165	Neoss® Guide - Guide Key Ø2.2/2.85
51166	Neoss® Guide - Guide Key Ø3.0/3.2
51167	Neoss® Guide - Guide Key Ø3.4/3.6
51168	Neoss® Guide - Guide Key Ø3.9/4.1
51169	Neoss® Guide - Guide Key Ø4.4/4.6
51170	Neoss® Guide - Guide Key Ø4.9/5.1
51178	Neoss® Guide - Guide Key Ø5.5
51171	Neoss® Guide - Countersink Conduit Ø5.0
51172	Neoss® Guide - Countersink Conduit Ø6.0
51156	Neoss® Guide - Sleeve Ø5.0 - 10 pcs
51157	Neoss® Guide - Sleeve Ø6.0 - 5 pcs
51176	Neoss® Guide - Guide Key Adapter - 2 pcs
51177	Neoss® Guide - Holder Guide Key Adapter

## Planning and Surgical Guide

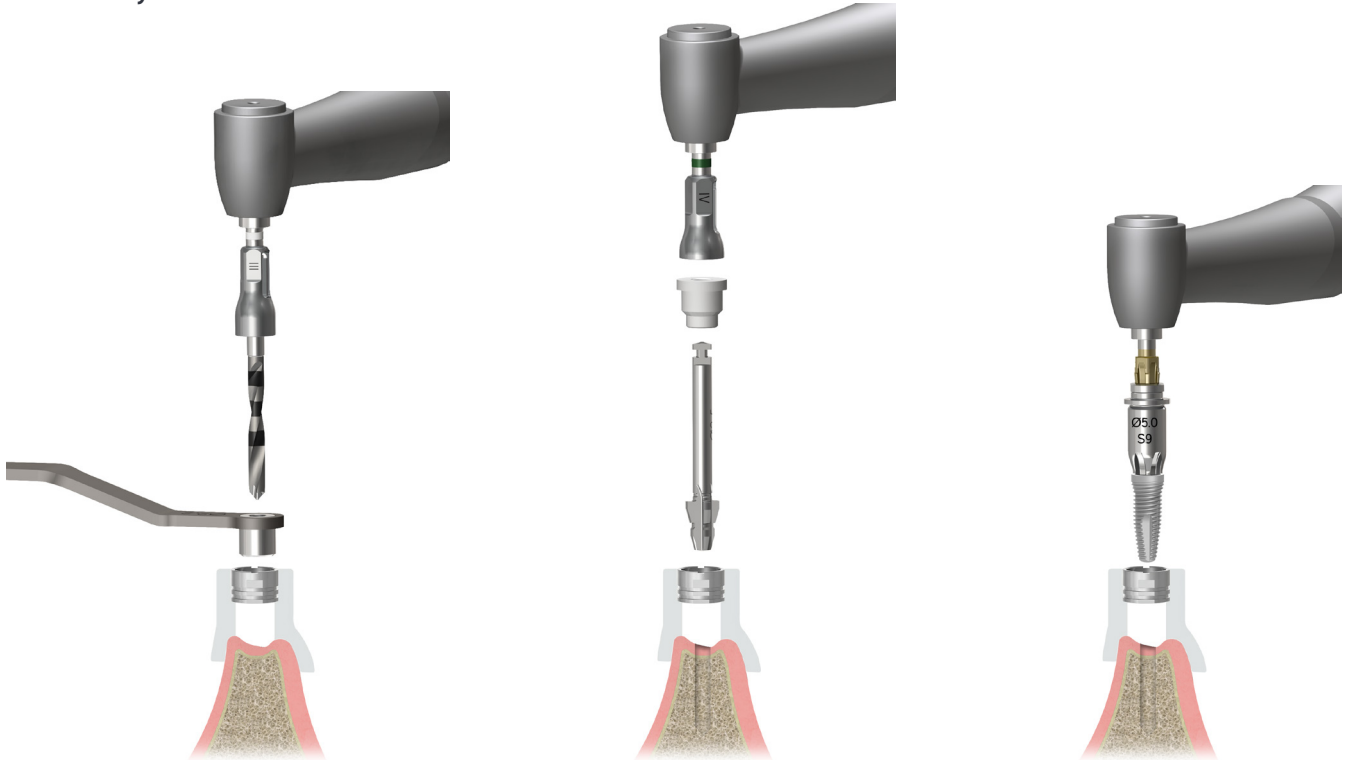
### Requirements

- Ø5.0 mm Guide Sleeve (Neoss Implants Ø3.5, Ø4.0 and Ø4.5 mm of 7-15 mm lengths) or a dedicated Neoss Ø6.0 mm Guide Sleeve (Neoss Implants Ø5.0, Ø5.5 and Ø6.0 mm of 7-15 mm lengths where applicable). The Neoss provided Ø5.0 mm Guide Sleeve is recommended while the Neoss Ø6.0 mm Guide Sleeve is required due to its compatibility with the Guide Key Adapter.
- Top surface of Sleeve at 9 mm above the Implant



### Step by step

#### Short summary Neoss® Guide



1. Neoss drill assembled with selected Drill Hub, subsequent drilling to hub through the corresponding Guide Key. All Neoss drill protocols apply.

2. Optional: Countersink Conduit oriented and assembled with Drill Hub IV and Countersink. Subsequent countersinking to hub.

3. Implant attached to Implant Mount and inserted to hub.

### Note

The Neoss® Guide solution does not;

- Replace the need for careful diagnosis and treatment planning.
- Replace the need for good surgical skills.
- Allow for fabrication of a final prosthesis prior to the placement of implants.
- Support the use of Neoss short drills and Pilot drill.

Please refer to Instructions for Use – Neoss® Guide Kit for information on detailed clinical usage and required settings of the planning software used.